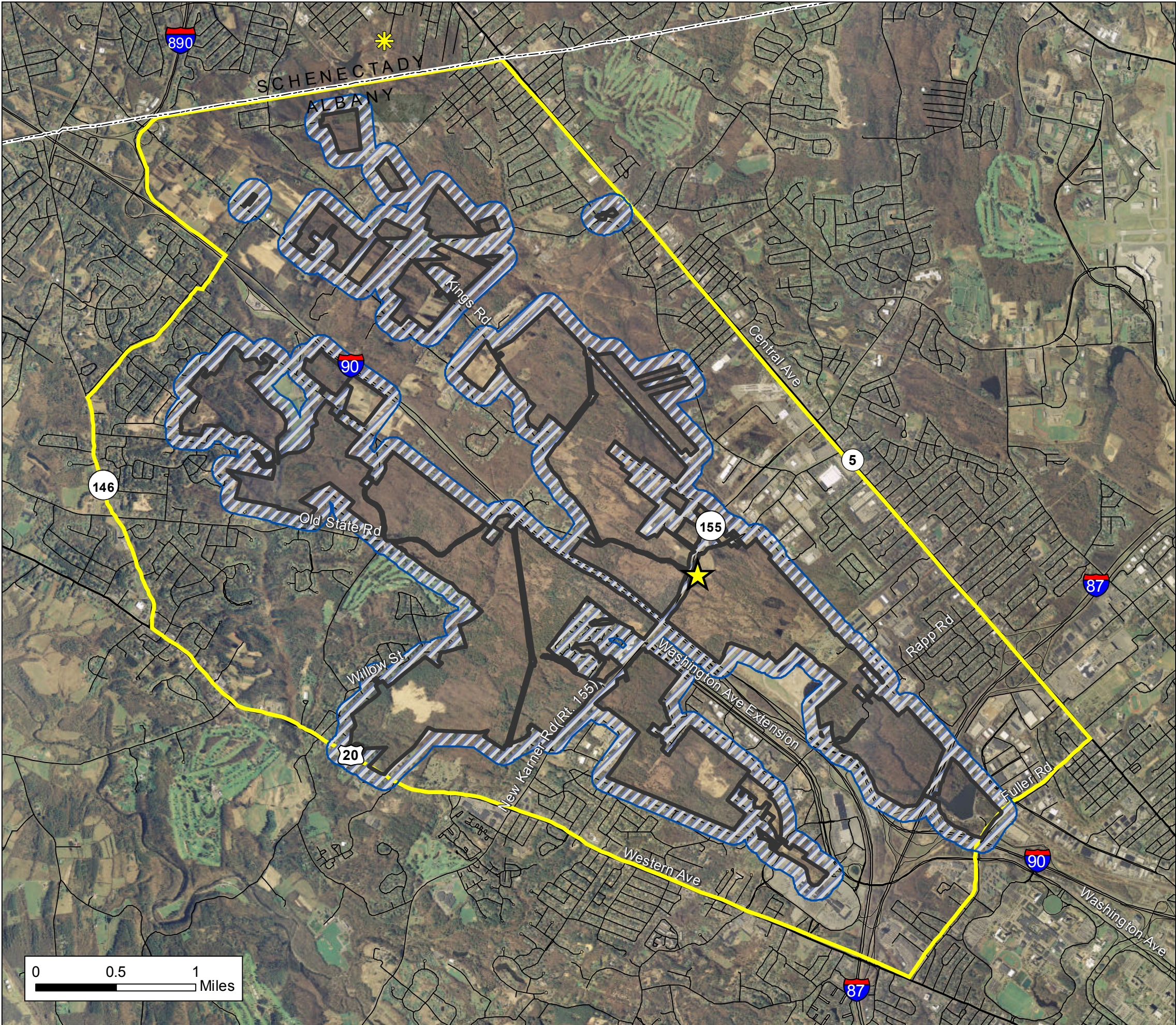


Management Plan For The Albany Pine Bush Preserve



Study Area

13,000 acres

500 ft. Buffer Zone

Preserve Boundary

Discovery Center

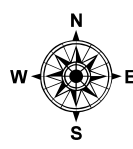
Woodlawn Preserve

Roads

Sources:

Imagery - 2007, 1 foot Natural Color Orthoimagery,
Trails - 2015, Albany Pine Bush Preserve
Roads - 2009, NY CSCIC

Prepared By:



March 2017

**Figure 5:
Fire Management
Smoke Buffer Zone**

Prepared by: Tyler Briggs, Fire Management and GIS Specialist